



EMPOWER. ENGAGE. EDUCATE

Build 2 Lead is a P.O.W.E.R. building organization.

**PROSPERITY. OPPORTUNITY. WELLNESS.
EMPOWERMENT. RESILIENCE.**

Build 2 Lead creates P.O.W.E.R. by collaborating with schools, businesses, health organizations, and governments to provide educational opportunities, community outreach, and power building initiatives to counter systemic and structural racism.



Build 2 Lead programs have served over

1,800

students and community members since 2021



SCHOOLS

B2L offers educational, innovative, and uplifting programming directly to students in schools and in youth spaces



COMMUNITIES

Events and programs engage the greater BIPOC community in power-building initiatives



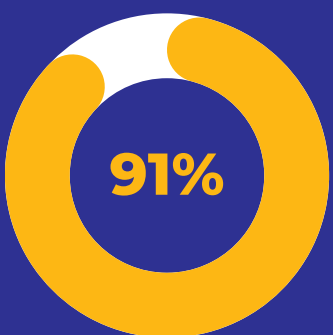
SYSTEMS

B2L provides resources and training to schools and institutions to counter structural racism within systems

OVER

\$500,000

spent directly on programs for students, stipends, and aid for families since 2021



Of the students currently enrolled Build 2 Lead Direct Programs

91%

identify as belonging to the BIPOC community



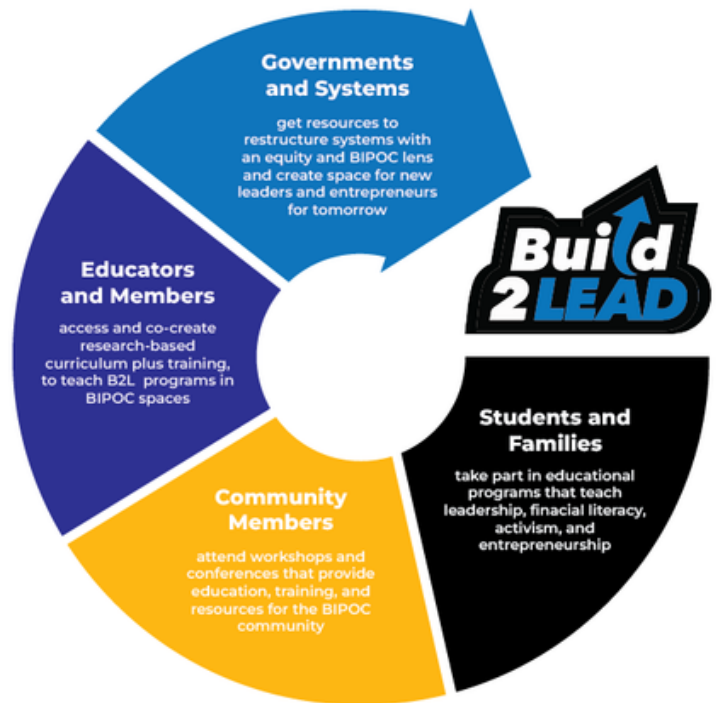
EMPOWER. ENGAGE. EDUCATE

Build 2 Lead Impact

BUILDING BLOCKS FOR SYSTEM-WIDE CHANGE

Build 2 Lead’s educational programming is crucial for fostering equity and opportunity.

Focusing on financial literacy, career options, advocacy training, and civic engagement, our initiatives provide essential skills needed to navigate systemic barriers. Our programs enhance individual potential and cultivate a collective strength, enabling participants to advocate for their communities and drive meaningful change



B2L in Schools

1,400+ STUDENT PARTICIPANTS SINCE 2021



We work in schools and youth spaces directly with students and educators.

We focus on social and emotional learning, advocating for self and community, educational and career guidance, and financial literacy.

PROGRAMS INCLUDE:
CIVIC CHAMPIONS
ENTRELEADERSHIP
REACHING FOR GREATNESS
CLOSING THE GAP
GAMECHANGERS ACADEMY

400+ COMMUNITY PARTICIPANTS SINCE 2021

B2L in the Community

Build 2 Lead engages members of the community through programs that educate, uplift, and enable community members to create positive change in the areas of education, healthcare, and economic mobility.

PROGRAMS INCLUDE:
MELANIN AND MEDICINE
POWER CONFERENCE
POWER COUNCIL
COMMUNITY COUNCIL
RPAC



“We're using collective experiences to teach young people and communities of color to be entrepreneurs, navigate systems, and to be advocates for their community.”

- Jimmy Brown (Executive Director)